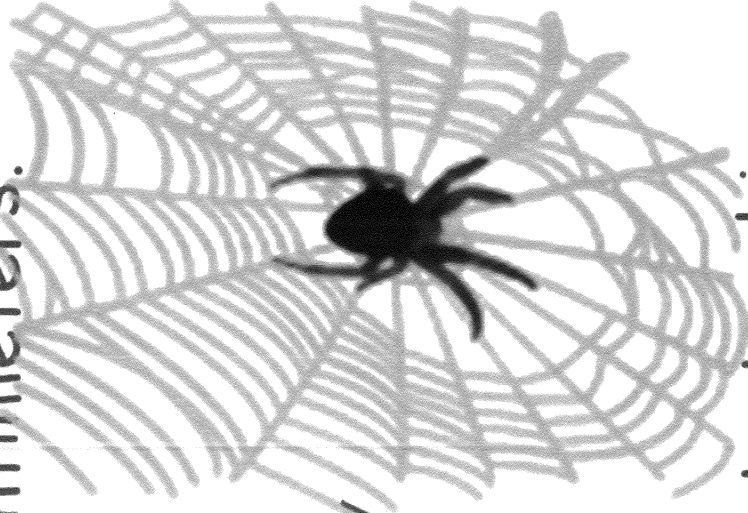


Sam the Slippery Spider

Sam is a garden spider. Everyday he climbs 10 centimeters up his dragline to make a web. Unfortunately it has been very windy, and every night, he gets pushed back down 4 centimeters.



Today, Sam will start climbing back up his dragline from the ground level - he headed for the ground yesterday to escape a wasp. He wants to build an orb web 24 centimeters above the ground where he best finds bugs.

How long will it take before Sam can start making his orb web? Write an equation to represent Sam's journey.